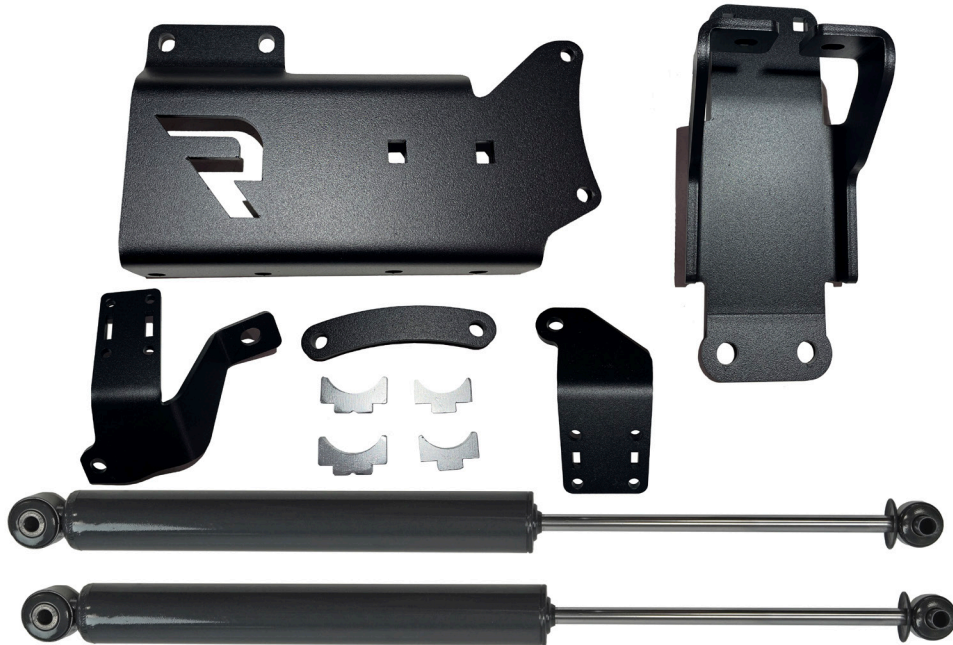


**SUPERLIFT**
SUSPENSION300 HUEY LENARD LOOP | WEST MONROE | LA 71292
OFFICE: 318-397-3000 | FAX: 318-397-3040
SERVICE & TECH SUPPORT: 800-551-4955
SUPERLIFT.COM

2014 - 2025 RAM 2500/3500 DUAL STEERING STABILIZER

INSTALLATION INSTRUCTIONS



INTRODUCTION

Installation requires a professional mechanic. Prior to beginning, inspect the steering sector-to-frame and all suspension-to-frame attaching points for stress cracks. The overall vehicle must be in excellent working condition; repair or replace all worn parts.

Read instructions several times before starting. Be sure you have all needed parts and know where they install. Read each step completely as you go.

NOTES:

- Prior to beginning the installation, check all parts and hardware in the box with the parts list below. If you find a packaging error, contact Superlift directly. Do not contact the dealer where the system was originally purchased. You will need the control number from each box when calling; this number is located at the bottom of the part number label and to the right of the bar code.
- A foot-pound (unless noted) torque reading is given in parenthesis () after each appropriate fastener.
- Prior to attaching components, be sure all mating surfaces are free of grit, grease, undercoating, etc.
- A factory service manual should be on hand for reference.

PARTS LIST: The part number is stamped into each part or printed on an adhesive label. Identify each part and place the appropriate mounting hardware with it.

STEP	PART NUMBER	QTY. PER KIT	DERSRIPTION	NEW ATTACHING HARDWARE	QTY. PER BRACKET
5	55-01-92770	1	Center Axle Bracket	8mm x 40mm, 1.25 Pitch, Grade 10.9	2
				8mm Flat Washer	2
				Tread Locker	1
5	55-07-92770	1	Center Cylinder Mount Bracket	3/8" x 1" Carriage Bolt, Coarse Thread, Grade 5	4
				3/8" Flange Nut, Coarse Thread	4
8	55-06-92770	1	Spacer - Center Bracket		
10	55-04-92770	1	Tie Rod Bracket - Passenger Side	5/16" x 1-3/4" x 2-3/4" Ubolt, Coarse Thread	2
				5/16" Flange Nut, Coarse Thread	4
10	55-05-92770	2	Tie Rod Key, Passenger Side		
12	55-02-92770	1	Tie Rod Bracket - Driver Side	3/8" x 1-1/2" x 2-1/2" Ubolt, Coarse Thread	2
				3/8" Flange Nut, Coarse Thread	4
12	55-03-92770	2	Tie Rod Key, Driver Side		
17	STNR085	2	King Stabilizer Cylinder	1/2" X 2-3/4" Bolt, Coarse Thread, Grade 8	2
				1/2" Nyloc Nut, Coarse Thread	2
				1/2" SAE Washer	4
OR					
17	659631	2	Superlift Stabilizer Cylinder	1/2" X 2-3/4" Bolt, Coarse Thread, Grade 8	2
				1/2" Nyloc Nut, Coarse Thread	2
				1/2" SAE Washer	4
OR					
17	BE5-F355-T0	2	Bilstein Stabilizer Cylinder	1/2" X 2-3/4" Bolt, Coarse Thread, Grade 8	2
				1/2" Nyloc Nut, Coarse Thread	2
				1/2" SAE Washer	4
OR					
17	985-24-170	2	Fox Stabilizer Cylinder	1/2" X 2-3/4" Bolt, Coarse Thread, Grade 8	2
				1/2" Nyloc Nut, Coarse Thread	2
				1/2" SAE Washer	4

INSTALLATION

NOTE: Save all factory components and hardware for reuse, unless noted.

1. Make sure the tires are pointed straight forward. Place the transmission in park and chock the tires.
2. [Illustration 1] Remove the factory steering stabilizer cylinder and discard.
3. [Illustration 2] Remove the factory steering stabilizer mounting bracket from the axle.



4. [Illustration 3] Remove the factory steering stabilizer mounting bracket from the tie rod.
5. Attach the new center cylinder mounting bracket (55-07-92770) to the new center axle bracket (55-01-92770) using the supplied 3/8" carriage bolts and flange bolts.
6. Remove the two differential bolts to allow for the new center bracket to be installed.
7. [Illustration 4] Loosely attach the new center bracket assembly on the axle using the factory hardware, only installing the bottom passenger side bolt.



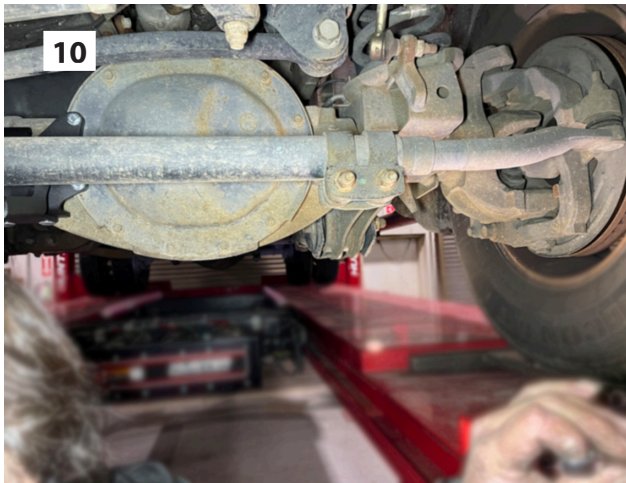
8. [Illustration 5] Place the new differential spacer (55-06-92770) between the center bracket assembly and the differential and secure using supplied 8mm bolts and washers, applying the supplied thread locker to the bolts.
9. [Illustration 6 & 7] Install the remaining factory center axle bracket hardware and tighten all bolts.



10. [Illustration 8] Place the new passenger tie rod bracket “keys” (55-05-92770) into the slots on the new passenger tie rod bracket (55-04-92770). NOTE: The passenger side keys have a notch at the bottom.
11. [Illustration 9] Loosely install the new passenger side tie rod bracket in the inner most factory location using the short factory bolt.
12. [Illustration 9] Secure the new tie rod bracket to the tie rod with the supplied 5/16” ubolts and flange nuts.



13. [Illustration 10 & 11] The driver’s side tie rod adjuster pinch clamp bolts point to the front of the vehicle from the factory. The bolts need to be removed and turned to face the rear of the vehicle to allow for room for the stabilizer cylinders.
14. [Illustration 12] Place the new driver tie rod bracket “keys” (55-03-92770) into the slots on the new driver tie rod bracket (55-02-92770). NOTE: The driver side keys DO NOT have a notch at the bottom.
15. [Illustration 12] Position the bracket so the distance between the center of the mounting hole on the center bracket and the center of the mounting hole on the tie rod bracket, measures 19.25”.



16. [Illustration 12] Secure the new tie rod bracket to the tie rod with supplied 3/8" ubolts and flange nuts.

17. [Illustration 13] Install the new steering stabilizer cylinders with the body mounted to the axle bracket and the shaft ends mounted to the tie rod brackets using the supplied 1/2" hardware; tighten. (80)



18. Have an assistant cycle the steering lock to lock as you observe the operation of the steering stabilizers. Verify the steering operates smoothly and the stabilizers do not "bottom out," preventing the steering from operating through its full cycle. If either one of the stabilizers bottoms out, it may be necessary to adjust the position of the tie rod bracket until the necessary clearance is achieved.

19. Also during the steering cycle, check clearance between the stabilizer bodies and the rest of the steering components, in particular the tie rod clamp. Check to make sure all steering components are operating properly without any binding. Double-check all fasteners for proper tightness and adequate clearance.





Limited Lifetime Warranty

Your Superlift® product is covered by the Limited Warranty explained below that gives you specific legal rights. This limited warranty is the only warranty Superlift® makes in connection with your product purchase. Superlift® neither assumes nor authorizes any retailer or other person or entity to assume for it any other obligation or liability in connection with this product or limited warranty.

What is covered? Subject to the terms below, Superlift® will repair or replace its products found defective in materials or workmanship for so long as the original purchaser owns the vehicle on which the product was originally installed. Your warrantor is LKI Enterprises, Inc. d/b/a Superlift® Suspension Systems ("Superlift®").

What is not covered? Your Superlift® Limited Warranty does not cover products, parts or vehicles Superlift® determines to have been damaged by or subjected to:

- Alteration, modification or failure to maintain.
- Normal wear and tear (bushings, tie-rod ends, etc.). Scratches or defects in product finishes (powdercoating, plating, etc.),
- Damage to or resulting from vehicle's electronic stability system, related components or other vehicle systems.
- Racing or other vehicle competitions or contests. Accidents, impact by rocks, trees, obstacles or other aspects of the environment.
- Theft, vandalism or other intentional damage.

Remedy Limited to Repair / Replacement. The exclusive remedy provided hereunder shall, upon Superlift's inspection and at Superlift's option, be either repair or replacement of product or parts covered under this Limited Warranty. Customers requesting warranty consideration should contact Superlift® by phone (1-800-551-4955) to obtain a Returned Goods Authorization number. All removal, shipping and installation costs are customer's responsibility.

If a replacement part is needed before the Superlift® part in question can be returned, you must first purchase the replacement part. Then, if the part in question is deemed warrantable, you will be credited / refunded.

Other Limitations - Exclusion of Damages - Your Rights Under State Law

- Neither Superlift® nor your independent Superlift® dealer are responsible for any time loss, rental costs, or for any incidental, consequential or other damages you may have.
- This Limited Warranty gives you specific rights. You may also have other rights that vary from state to state. For example, while all implied warranties are disclaimed herein, any implied warranty required by law is limited to the terms of our Limited Lifetime Warranty as described above. Some states do not allow limitations of how long an implied warranty lasts and / or do not allow the exclusion or limitation of incidental or consequential damages, so the limitations and exclusions herein may not apply to you.

Important Product Use and Safety Information / Warnings

As a general rule, the taller a vehicle is, the easier it will roll over. Offset, as much as possible, what is lost in rollover resistance by increasing tire track width. In other words, go "wide" as you go "tall". Many sportsmen remove their mud tires after hunting season and install ones more appropriate for street driving; always use as wide a tire and wheel combination as feasible to enhance vehicle stability. We strongly recommend, because of rollover possibility, that the vehicle be equipped with a functional roll bar and cage system. Seat belts and shoulder harnesses should be worn at all times. Avoid situations where a side rollover may occur.

Generally, braking performance and capabilities are decreased when significantly larger / heavier tires and wheels are used. Take this into consideration while driving. Also, changing axle gear ratios or using tires that are taller or shorter than factory height will cause an erroneous speedometer reading. On vehicles equipped with an electronic speedometer, the speed signal impacts other important functions as well. Speedometer recalibration for both mechanical and electronic types is highly recommended.

Do not add, alter, or fabricate any factory or aftermarket parts to increase vehicle height over the intended height of the Superlift® product purchased. Mixing component brands is not recommended.

SUPERLIFT SUSPENSION

300 Huey Lenard Loop Rd.
West Monroe, Louisiana 71292
Phone: (318) 397-3000
Sales / Tech: (800) 551-4955
Fax: (318) 397-3040
www.superlift.com